



Pat Langdon
UK Autodrive



UK Autodrive

Milton Keynes leading the way in partnership
with Coventry and the motor industry



Programme and Progress

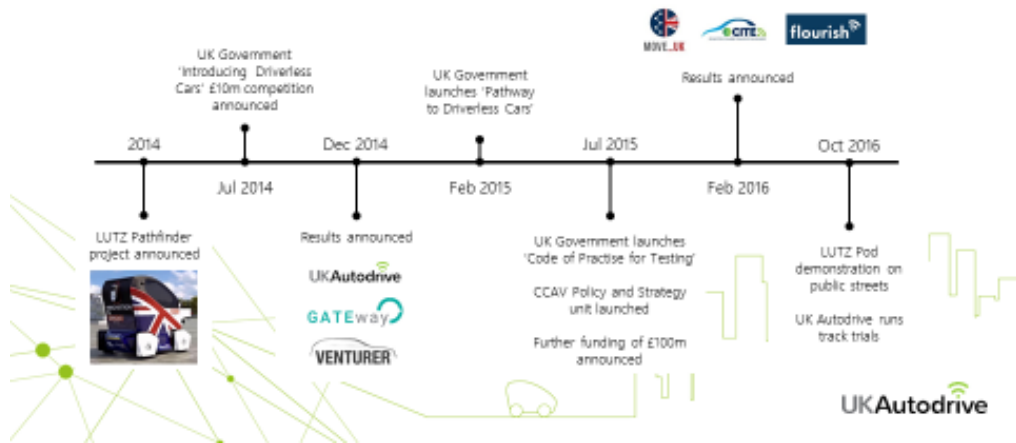
Dr Patrick Langdon
University of Cambridge Engineering Department

Driver Ahead? Conference, October 4th
Royal Automobile Club, London
October 2017



The consortium

The UK Context



Partners and logos:

- ARUP
- AXA
- CATAPULT
- Coventry City Council
- GOWLING WLG
- JAGUAR
- LAND-ROVER
- MILTON KEYNES COUNCIL
- MIRA
- Ford
- RDM GROUP
- TATA
- TATA MOTORS EUROPEAN TECHNICAL CENTRE
- THALES
- The Open University
- UNIVERSITY OF CAMBRIDGE
- UNIVERSITY OF OXFORD

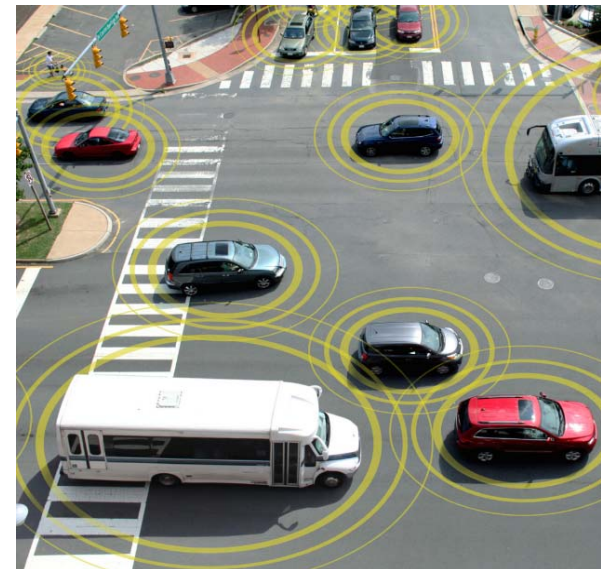


The UK Autodrive project

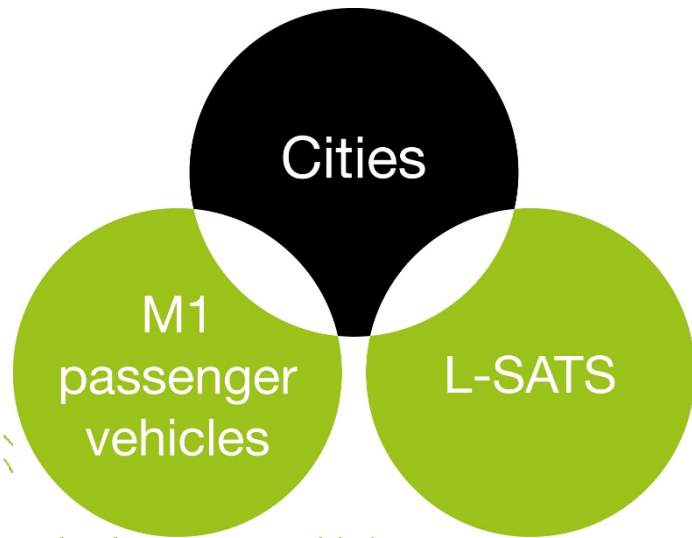
- Validate driverless technology
- Demonstrate interoperability
- Demonstrate scalability
- Identify new business models
- Increase public awareness and acceptance
- Investigate legal and regulatory issues
- Explore benefits around infrastructure design, traffic flow and emissions

Technological

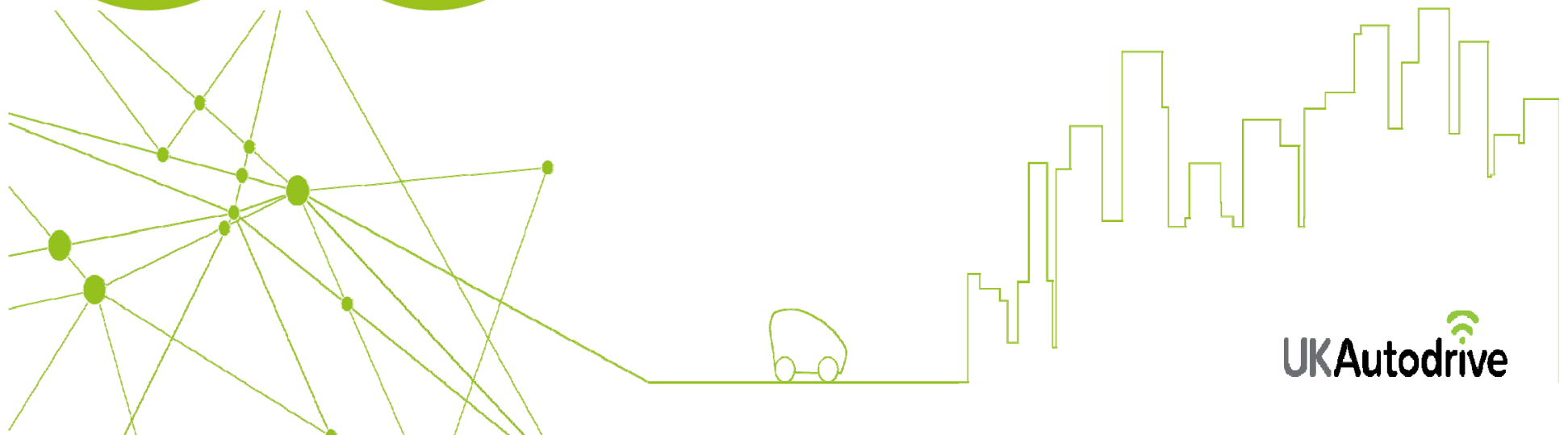
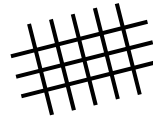
Societal
Economic
Environmental
Political



Programme



The Trial Beds



M1
passenger
vehicles

Connected and autonomous vehicles

- Three major OEMs working collaboratively
- Evolutionary trials and demonstrations
- Progressively more complex scenarios



Low-Speed Autonomous Transport System

Next generation personal transport system for Milton Keynes City Centre

- A fleet of 40 fully (L5) autonomous vehicles
- Operation in shared urban spaces
- Point-to-point on demand service



Milton Keynes and Coventry

Understanding of the impact of driverless vehicles on road users and wider society.



Public attitudes



Potential impact on congestion



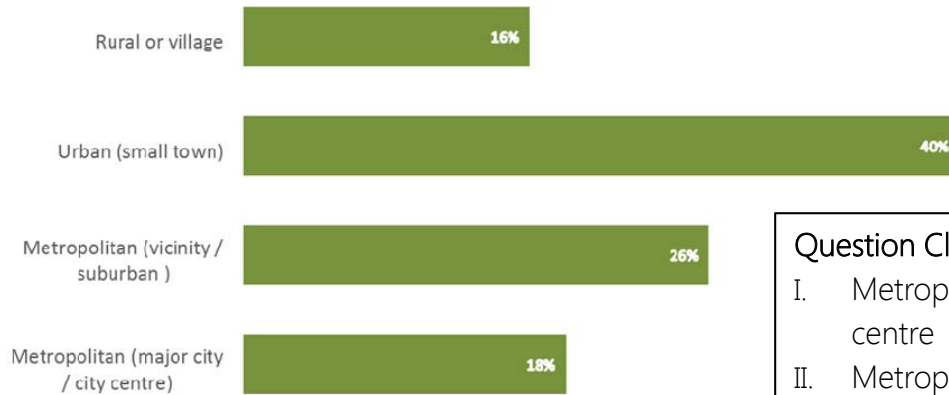
Business models for self-driving fleets



Legal and insurance issues

Public Attitudes Survey

Sampling: The area where you are living



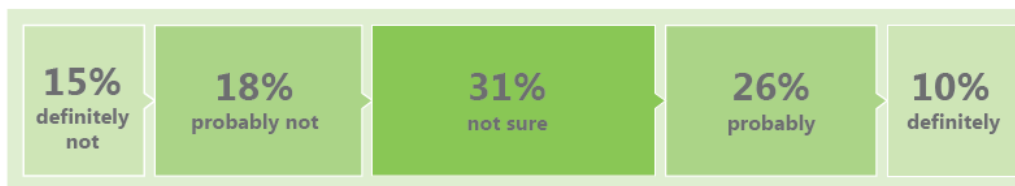
Question Classes:

- I. Metropolitan major city or city centre
- II. Metropolitan vicinity or suburban not in the city centre
- III. Urban smaller town or city
- IV. Rural or village

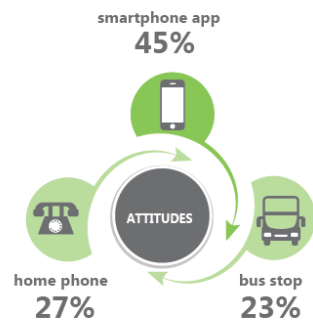


Milton Keynes and Coventry

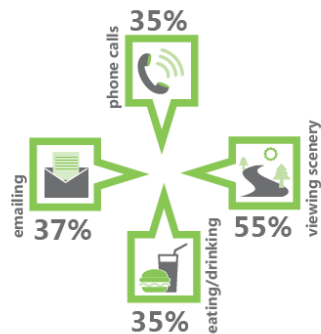
Would you use a fully driverless vehicle?



How would you like to call one up?



What would you do on the way?



What would you use a self-driving vehicle for?





Questions?

www.ukautodrive.com

